



## Far reaches

The three artists exhibiting their work in the exhibition *Far Reaches* at Ellsworth Gallery in Santa Fe, New Mexico, reach into our geological past, our art historical past and the past of our material culture.

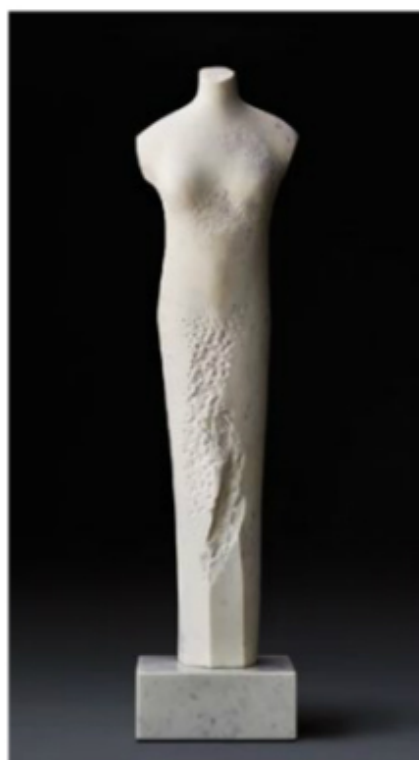
Gallery owner Barry Ellsworth says, "I am perpetually fascinated by the evocative threads between historic art and the art of the present. These three artists approach the terrain of timelessness and memory from

contrasting but synergistic perspectives."

Fresh from exhibiting in the 2015 Royal Academy of Arts' *Summer Exhibition* in London, a 247-year tradition, **Elise Ansel** will exhibit her translations of Renaissance and Baroque paintings into gestural, painterly abstractions. Ansel brings the energetic intensity of bacchanals to the surface in works that are stimulating "both optically and emotionally," she says. "I reinterpret images from a time when women were treated as objects rather than as primary creators."

The wings of Time in Goya's allegory *Truth Rescued by Time, Witnessed by History* (1812-1814) explode in bursts of light in her *Truth Rescued by Time*, complementing the energy of the original and making it almost tangible.

**Claire McArdle** went to Carrara, Italy, to work with master carvers at the source of the marble that has inspired artists for





3

1

**Elise Ansel**, *Truth Rescued by Time*, oil on linen, 30 x 25"

2

**Claire McArdle**, *Torso Luminoso*, Carrara Bianco marble, 39 x 9 x 9". Photo by Jafe Parsons.

3

**Kathryn Stedham**, *Midday Cliffs at Abiquiu*, oil on canvas, 24 x 30"

4

**Claire McArdle**, *Torso Twilight*, calacatta Carrara marble, 39 x 18 x 18". Photo by Jafe Parsons.



centuries. Her archetypal forms reach back through time. *Torso Luminoso*, for instance, recalls Cycladic art of nearly 5,000 years ago and maintains the quality of the rough stone formed millions of years before. Her sources of inspiration are universal.

She says, "I aim to create timeless work that resonates with spirit. In this process, I develop expressions of my personal mythology, bound to my ancestors through the archetype, altered by the world in which I live, made unique by my hand."

**Kathryn Stedham's** paintings capture the ever-changing light on the landscape of the West. The mountains continue to be pushed up by continental drift and eroded by wind and rain. Her method of painting echoes the dynamism of the landscape. She says, "My paintings accrete from a system of drips, scraping and incising, not unlike the natural process of erosion and deposition occurring in the landscape around us. Just what can we discover about what is uncovered, or revealed?"

*Far Reaches* continues through September 12. ●

4